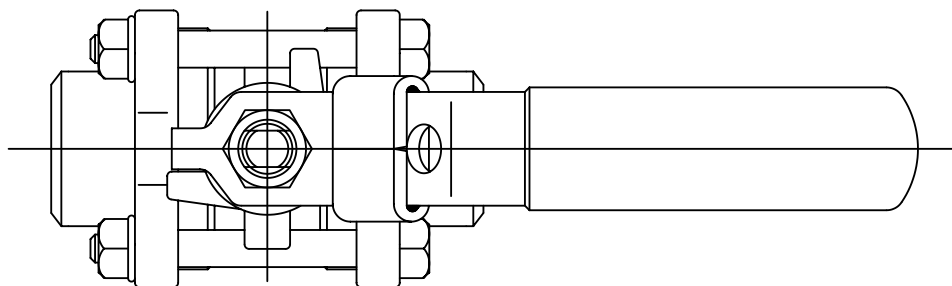
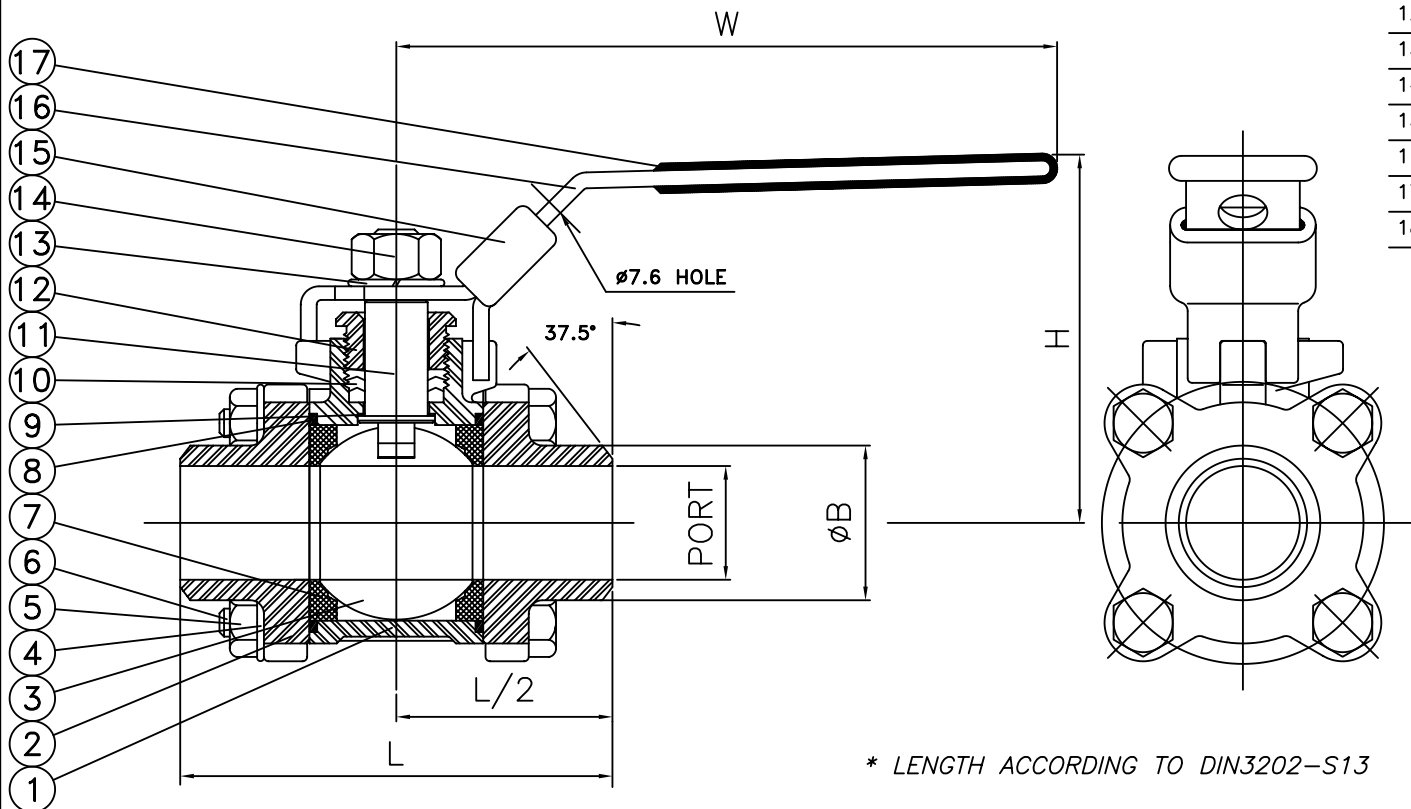


VL-501B-AS

MATERIAL LIST



No.	DESCRIPTION	SPECIFICATION
1.	BODY	ASTM A-351 GRADE CF8M
2.	END CAP	ASTM A-351 GRADE CF8M
3.	CAM LOCK END CAP	ASTM A-351 GRADE CF8M
4.	BALL	SS316
5.	BOLT WASHER	SS304
6.	BOLT NUT	SS304
7.	BOLT	SS304
8.	SEAT RING	PTFE
9.	BODY SEAL	PTFE
10.	THRUST WASHER	PTFE
11.	STEM SEAL	PTFE
12.	STEM	SS316
13.	GLAND NUT	SS304
14.	HANDLE WASHER	SS304
15.	HANDLE NUT	SS304
16.	LOCKING PAD	SS304 (OPTIONAL)
17.	HANDLE	SS304
18.	HANDLE COVER	PLASTIC



DIMENSIONS (MM)

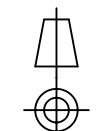
SIZE	PORT	L	H	W	ØB
1/4"	10	70	55	95	20
3/8"	12	70	55	95	20
1/2"	16	75	64	125	23
3/4"	20	90	67	125	28
1"	25	100	83	140	34
1-1/4"	32	110	89	140	41
1-1/2"	40	125	100	200	49
2"	50	150	108	200	62
2-1/2"	65	190	150	250	78
3"	80	220	161	250	94
4"	100	270	180	290	125

* LENGTH ACCORDING TO DIN3202-S13



銓剛實業股份有限公司

VALAND INDUSTRIAL CORPORATION



ANGLE

1001-2500	± 0.50	± 1.50
251-1000	± 0.20	± 1.00
64-250	± 0.20	± 0.50
17-63	± 0.10	± 0.30
5-16	± 0.07	± 0.20
1-4	± 0.05	± 0.15
SIZE	MACHINING	INV.CASTING

DRAWING	DATE	Aug.01,1997	DESCRIPTION
DESIGN	UNIT	MM	VL-501B 3PC BALL VALVE 1000 WOG (CWP) BUTT-WELDING TYPE
CHECK	SCALE	FREE	
APPROVE	MATERIAL		DRW.No. VL-501B-AS