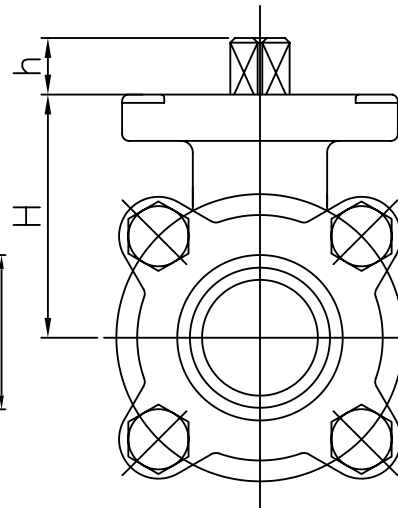
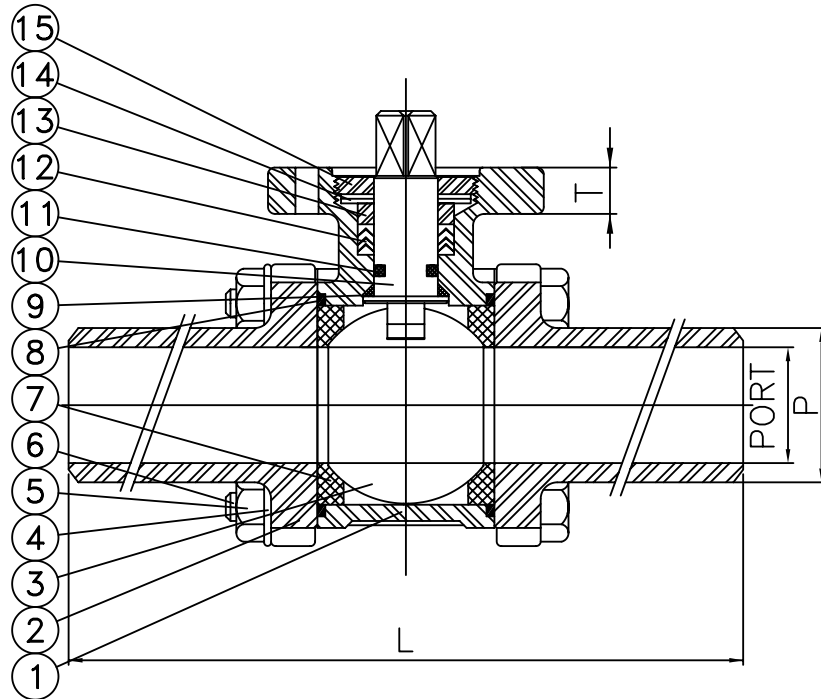
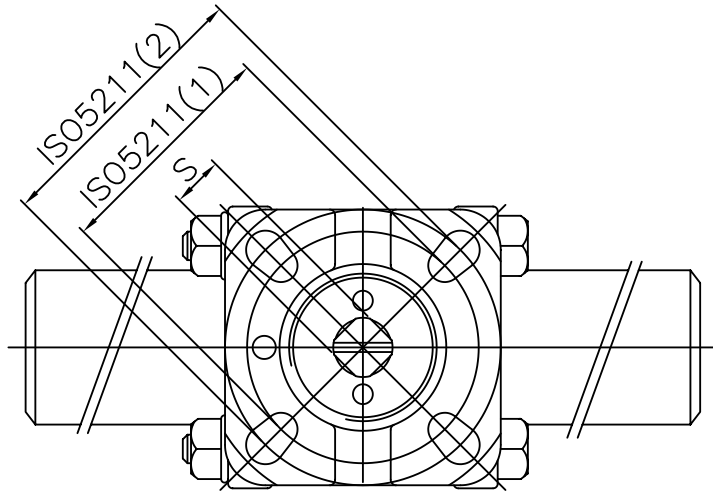


VL-5N1LB-FS



MATERIAL LIST

No.	DESCRIPTION	SPECIFICATION
1.	BODY	DIN 1.4408
2.	END CAP	DIN 1.4408
3.	BALL	SS316
4.	BOLT WASHER	SS304
5.	BOLT NUT	SS304
6.	BOLT	SS304
7.	SEAT RING	PTFE
8.	BODY SEAL	PTFE
9.	THRUST WASHER	PTFE
10.	STEM	SS316
11.	O-RING	VITON
12.	STEM SEAL	PTFE
13.	GLAND RING	SS304
14.	BEVEL WASHER	SPRING STEEL
15.	GLAND NUT	SS304

DIMENSIONS (MM)

SIZE	PORT	L	H	h	S	T	P	ISO 5211
1/2"	16	225	40	7	9	9	23	F03 PCD36 $\phi 6 \times 4$
								F04 PCD42 $\phi 6 \times 4$
3/4"	20	225	44	9	9	9	28	F03 PCD36 $\phi 6 \times 4$
								F04 PCD42 $\phi 6 \times 4$
1"	25	245	52	12	11	10	34	F04 PCD42 $\phi 6 \times 4$
								F05 PCD50 $\phi 7 \times 4$
1-1/4"	32	255	58	12	11	10	41	F04 PCD42 $\phi 6 \times 4$
								F05 PCD50 $\phi 7 \times 4$
1-1/2"	40	260	68	16	14	13	49	F05 PCD50 $\phi 7 \times 4$
								F07 PCD70 $\phi 9 \times 4$
2"	50	275	77	16	14	13	62	F05 PCD50 $\phi 7 \times 4$
								F07 PCD70 $\phi 9 \times 4$
2-1/2"	65	335	98	19	17	13	78	F07 PCD70 $\phi 9 \times 4$
								F10 PCD102 $\phi 11 \times 4$
3"	80	355	110	19	17	13	94	F07 PCD70 $\phi 9 \times 4$
								F10 PCD102 $\phi 11 \times 4$
4"	100	365	138	24	22	20	125	F10 PCD102 $\phi 11 \times 4$



銓剛實業股份有限公司

VALAND INDUSTRIAL CORPORATION



ANGLE

1001-2500	± 0.50	± 1.50
251-1000	± 0.20	± 1.00
64-250	± 0.20	± 0.50
17-63	± 0.10	± 0.30
5-16	± 0.07	± 0.20
1-4	± 0.05	± 0.15
SIZE	MACHINING	INV.CASTING

DRAWING	DATE	May.25,1998
DESIGN	UNIT	MM
CHECK	SCALE	FREE
APPROVE	MATERIAL	

DESCRIPTION	
VL-5N1LB 3PC FULL BORE BALL VALVE, PN63 EXTENTION BUTT-WELD	
DRW.No.	VL-5N1LB-FS